

Mekong EbA South:

Enhancing Climate Resilience in the Greater Mekong Sub-region through Ecosystem-based Adaptation in the Context of South-South Cooperation

Objective:

The overall objective of the project is to strengthen awareness and action of governments and communities in the **Greater Mekong Subregion (GMS)** to adapt to climate change using **Ecosystem-based Adaptation (EbA)** approach which will be achieved through three complementary



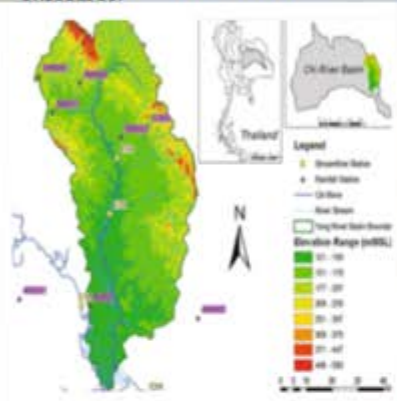
Outcome 1: Climate change adaptation interventions implemented by vulnerable communities in Thailand and Vietnam to manage climate change impacts, particularly droughts and floods.



Outcome 2: Enhanced knowledge and awareness of adaptation measures, including EbA, to shared climate change impacts in different ecosystems to promote regional cooperation, planning and implementation of adaptation in the GMS.



Outcome 3: Strengthened regional cooperation on climate change adaptation, particularly in response to floods and droughts in the GMS.



Project Site: Young River Basin

- The Young River Basin, a sub-basin of Chi River Basin, is located in northeastern of Thailand, covering an area of ~415,000 ha in the Kalasin, Roi-Et, Mukdahan, Yasothon and Sakol Nakorn provinces.
- The Basin is home to ~540,000 people, ~55% of which are female, and ~81% are farmers.
- The majority of land (69%) is used for agriculture, 50% is for rainfed rice and 17% is for cassava.
- The Basin is expected to experience increasing of temperatures and changing rainfall pattern which may result in rises in both the intensity and frequency of droughts in summer and floods during the monsoon period, and negatively affect the mostly agriculture-based livelihoods of local communities.

What is EbA?

Ecosystem-based Adaptation (EbA), also referred to as Nature-based Solutions for Adaptation, involves a wide range of ecosystem management activities, such as the sustainable management of forests, grasslands, and wetlands, that increase the resilience and reduce the vulnerability of people and the environment to climate change.

Project Information:

Donor: Adaptation Fund
Funding: 2.506 million USD*
Implementation period: 4 years (2024-2027)
Implementing Entity: UNEP
Executing Entity: MNRE by DWR, IUCN

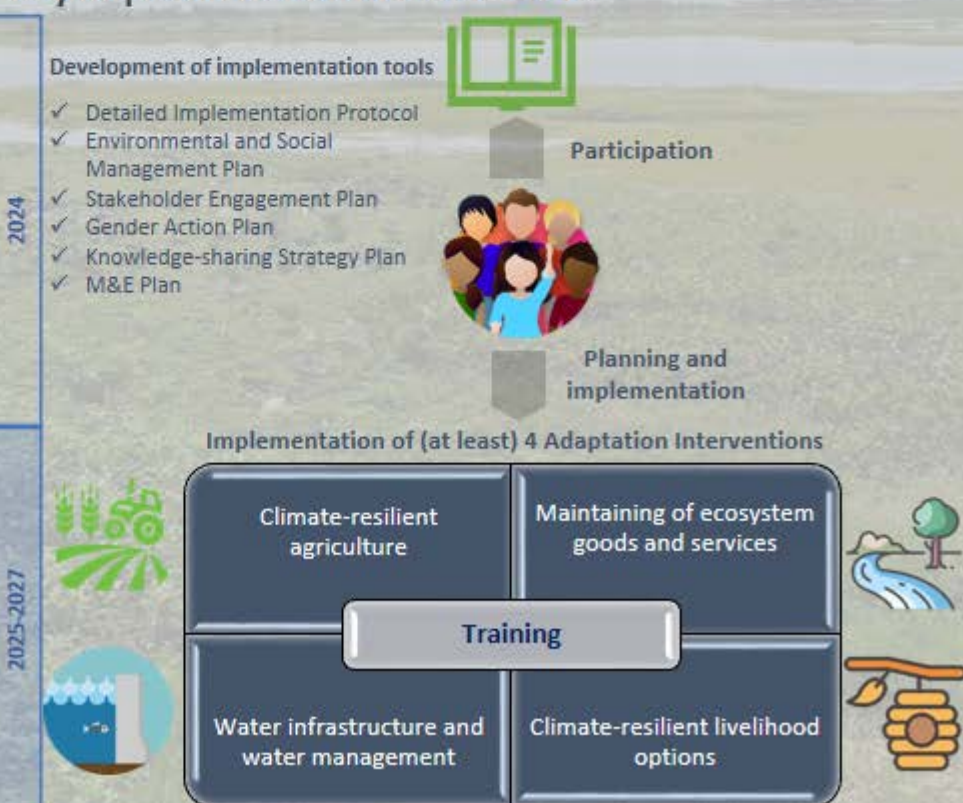
*for component implemented in Thailand



Management Team:



Key Implementation in 2024-2027:



For more information, please visit www.dwr.go.th

Contact: Thailand Project Management Unit

pmu.mk.eba.th@gmail.com

